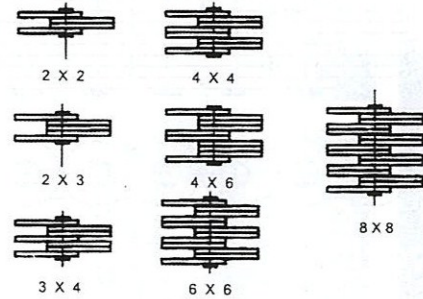
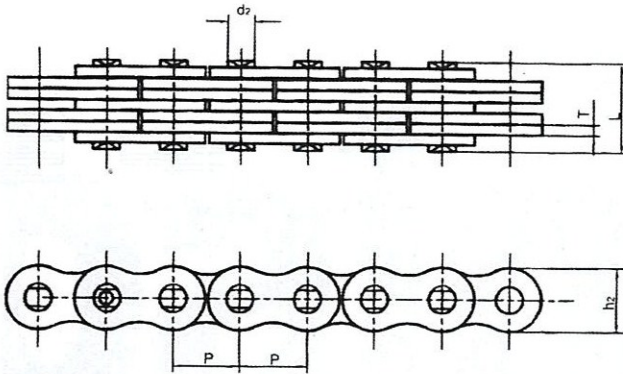


# Leaf Chains

## Lacing Combinations



### BL SERIES

Chain No.	Pitch	Lacing	plate Height	plate Thickness	Pin Diameter	Pin Length	Minimum Tensile Strength	Weight Per meter
	P		h2 max	T max				
	mm		mm	mm				
BL422	12.70	2X2	12.07	2.08	5.09	11.05	21.5	0.60
BL423		2X3				13.16	23	0.75
BL434		3X4				17.40	34.9	1.03
BL444		4X4				19.51	35.5	1.17
BL446		4X6				23.75	46	1.46
BL466		6X6				27.99	47.3	1.74
BL488		8X8				36.45	50.0	2.33
BL522		2X2				12.90	31.3	0.95
BL523	2X3	15.37	36.8	1.17				
BL534	3X4	20.32	51.5	1.63				
BL544	15.875	4X4	15.09	2.44	5.96	22.78	59	1.85
BL546		4X6				27.74	73.6	2.31
BL566		6X6				32.69	88.4	2.76
BL588		8X8				42.57	118	3.67
BL622		2X2				17.37	55.5	1.55
BL623		2X3				20.73	64.4	1.92
BL634		3X4				27.43	96.2	2.67
BL644		4X4				30.78	103	3.02
BL646	4X6	37.49	119	3.75				
BL666	6X6	44.20	154.7	4.50				
BL688	8X8	57.61	206.3	6.01				
BL822	25.40	2X2	24.13	4.09	9.54	21.34	76.7	2.43
BL823		2X3				25.48	95.8	3.02
BL834		3X4				33.76	144.7	4.20
BL844		4X4				37.90	153.3	4.77
BL846		4X6				46.18	192.7	5.90
BL866		6X6				54.46	230	7.10
BL888		8X8				71.02	306.7	9.43
BL1022		2X2				25.37	106	3.60
BL1023	2X3	30.33	132	4.50				
BL1034	31.75	3X4	30.18	4.90	11.11	40.23	185	6.25
BL1044		4X4				45.19	212	7.10
BL1046		4X6				55.09	265	8.90
BL1066		6X6				65.00	318	10.60
BL1088		8X8				84.81	424	14.10
BL1222		2X2				29.62	145.2	5.40
BL1223		2X3				35.43	181	6.70
BL1234		3X4				47.07	254	9.30
BL1244	38.10	4X4	36.20	5.77	12.71	52.88	290	10.60
BL1246		4X6				64.52	363	13.30
BL1266		6X6				76.15	435	15.90
BL1288		8X8				99.42	580	21.10