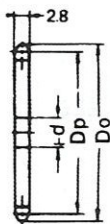
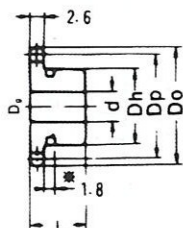


# ANSI 25 Standard Sprocket

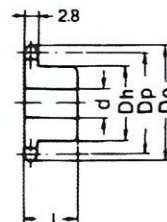
A TYPE



B TYPE



B TYPE



Dimension:mm

No. of Teeth	Pitch Dia Dp	Outside Dia Do	A type			B Type				Approx. WT (kg)	Material
			Bore : d	Approx. WT.(kg)	Material	Bore : d		Hub			
						Min.	Max.	Dh	L		
9	18.57	21	6	0.005		6	7	13	15	0.014	*
10	20.55	23	6	0.007		6	9	14	15	0.018	*
11	22.54	25	6	0.008		6	10	16	15	0.023	*
12	24.53	28	6	0.010		6	12	18	15	0.030	*
13	26.53	30	6	0.011		6	14	20	20	0.048	*
14	28.54	32	6	0.013		6	14	20	20	0.051	
15	30.54	34	6	0.015		6	14	20	20	0.053	
16	32.55	36	6	0.018		8	19	25	20	0.077	
17	34.56	38	6	0.020		8	19	25	20	0.079	
18	36.57	40	6	0.022		8	19	25	20	0.081	
19	38.58	42	6	0.025		8	19	25	20	0.084	
20	40.59	44	6	0.028		8	19	25	20	0.087	
21	42.61	46	6	0.031		8	22	30	20	0.119	
22	44.62	48	8	0.033		8	22	30	20	0.121	
23	46.63	50	8	0.036		8	22	30	20	0.124	
24	48.65	52	8	0.039		8	22	30	20	0.127	
25	50.66	54	8	0.043		8	25	35	20	0.165	
26	52.68	56	8	0.046		8	30	40	20	0.208	
27	54.70	58	8	0.050		8	30	40	20	0.212	
28	56.71	60	8	0.054		8	30	40	20	0.216	
29	58.73	62	8	0.058		8	35	45	25	0.324	
30	60.75	64	10	0.062		8	35	45	25	0.328	
31	62.77	66	10	0.066		10	35	45	25	0.328	
32	64.78	68	10	0.070	SS41	10	40	50	25	0.396	S35C
33	66.80	70	10	0.075		10	40	50	25	0.401	
34	68.82	72	10	0.079		10	40	50	25	0.405	
35	70.84	74	10	0.084		10	40	50	25	0.410	
36	72.86	76	10	0.089		10	40	50	25	0.415	
37	74.88	78	10	0.095		10	40	50	25	0.421	
38	76.90	80	10	0.100		10	40	50	25	0.426	
39	78.91	82	10	0.105		10	40	50	25	0.431	
40	80.93	84	10	0.111		10	40	50	25	0.437	
41	82.95	87	10	0.116		10	40	50	25	0.442	
42	84.97	89	10	0.122		10	40	50	25	0.448	
43	86.99	91	10	0.128		10	40	50	25	0.454	
44	89.01	93	10	0.134		10	40	50	25	0.460	
45	91.03	95	10	0.140		10	40	50	25	0.466	
46	93.05	97	10	0.147		10	40	50	25	0.473	
47	95.07	99	10	0.153		10	40	50	25	0.479	
48	97.09	101	10	0.160		10	40	50	25	0.486	
50	101.13	105	10	0.174		10	40	50	25	0.500	
54	109.21	113	10	0.202		10	40	50	25	0.528	
60	121.33	125	10	0.251		10	40	50	30	0.651	
65	131.43	135	10	0.294		12	40	50	30	0.72	
70	141.54	145	10	6.342		12	40	50	30	0.77	
75	151.64	155	12	0.392		12	40	50	30	0.82	
80	161.74	165	12	0.446		12	40	50	30	0.88	

NOTE :1. Sprocket marked with an asterisk (\*) has a groove at the external circumference of hub. Groove diameters (Dg) are : 9T=10.50mm, 10T=12.50mm, 11T=14.50mm, 12T= 16.50 mm, 13T= 18.50mm.