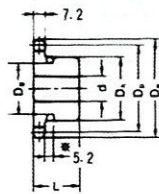


BS08B Standard Sprocket

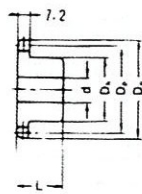
A TYPE



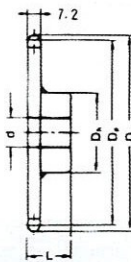
B TYPE



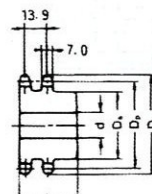
B TYPE



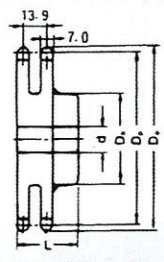
BW TYPE



DUPLEX B TYPE



DUPLEX BW TYPE



Dimension:mm

No. of Teeth	Pitch Dia Dp	Outside Dia Do	A Type			B Type /BW Type					Duplex B Type / Duplex BW Type						
			Bore : d	Approx. WT (kg)	Material	Bore : d		Hub		Approx. WT (kg)	Material	Bore : d		Hub		Approx. WT (kg)	Material
						Min.	Max.	Dh	L			Min.	Max.	Dh	L		
8	33.20	37.2	9			9	12.7	24.6	22.2	0.10	*						
9	37.13	41.0	9	0.04		9	14	28	22	0.11	*						
10	41.10	45.2	10	0.05		9	18	32	22	0.14	*	13	15	28	35	0.24	
11	45.08	48.7	10	0.06		10	23	37	22	0.19	*	13	18	30	35	0.27	
12	49.07	53.0	10	0.08		10	25	40	22	0.22		14	22	35	35	0.34	
13	53.07	57.4	10	0.10		13	23	37	22	0.23		14	24	39	35	0.39	
14	57.07	61.8	10	0.11		13	26	42	22	0.28		14	26	43	35	0.47	
15	61.08	65.5	12	0.15		13	28	46	22	0.34		14	28	47	35	0.56	
16	65.10	69.5	12	0.17		13	30	50	22	0.40		14	30	50	35	0.65	
17	69.12	73.6	12	0.20		13	32	54	22	0.46		14	32	54	35	0.75	
18	73.14	77.8	12	0.22		13	32	57	22	0.51		14	35	59	35	0.85	
19	77.16	81.7	12	0.24		13	38	62	22	0.59		14	38	63	35	0.98	
20	81.18	85.8	12	0.26		14	42	67	25	0.76		14	40	67	40	1.30	
21	85.21	89.7	12	0.30		14	45	71	25	0.85		14	40	68	40	1.40	
22	89.24	93.8	12	0.32		14	48	75	25	0.95		14	45	72	40	1.60	
23	93.27	98.2	12	0.35		14	48	77	25	1.00		14	45	76	40	1.70	
24	97.30	101.8	12	0.37		14	40	63	25	0.84	S35C (B TYPE)	14	50	80	40	1.90	S35C (DUPLEX B TYPE)
25	101.33	105.8	12	0.40		14	40	63	25	0.88		18	54	84	40	2.10	
26	105.36	110.0	12	0.45		14	40	63	25	0.92		18	54	88	40	2.30	
27	109.40	114.0	12	0.50		14	40	63	25	0.96		18	60	92	40	2.60	
28	113.43	118.0	12	0.51		14	40	63	25	1.00		18	65	96	40	2.80	
29	117.46	122.0	12	0.56		14	40	63	25	1.05		18	65	96	40	2.90	
30	121.50	126.1	14	0.60		14	40	63	25	1.10		18	65	100	40	3.00	
31	125.53	130.2	14	0.64	SS41	14	40	63	25	1.20		18	65	100	40	3.01	
32	129.57	134.3	14	0.68		14	45	68	28	1.30		23	65	100	50	3.00	
33	133.61	138.4	14	0.70		14	45	68	28	1.30		23	65	100	50	3.10	
34	137.64	142.6	14	0.75		14	45	68	28	1.30		23	65	100	50	3.10	
35	141.68	146.7	14	0.83		14	45	68	28	1.40		23	65	100	50	3.10	
36	145.72	151.0	15	0.90		17	45	68	28	1.40		23	65	100	50	3.40	
38	153.79	158.6	15	0.95		17	45	68	28	1.50		23	65	100	50	3.50	
40	161.87	166.8	15	1.06		17	45	68	28	1.60		23	65	100	50	3.60	
41	165.91	171.4	15	1.15		17	48	73	32	1.80							
42	169.95	175.4	15	1.20		17	48	73	32	1.90		23	65	93	50	4.50	
43	173.98	179.7	15	1.23		17	48	73	32	2.00							
44	178.02	183.8	15	1.30		17	48	73	32	2.10							
45	182.06	188.0	15	1.36		17	48	73	32	2.20		23	65	93	50	4.60	
48	194.18	200.3	15	1.56		17	48	73	32	2.40		23	65	93	50	5.60	
50	202.26	208.3	15	1.70		17	48	73	32	2.54		23	65	93	50	5.90	
54	218.42	224.1	15	2.00		17	48	73	32	2.84		23	65	93	50	6.91	
60	242.66	248.6	16	2.50		17	48	73	32	3.30		23	65	93	50	8.20	
65	262.87	269.0	16	2.87		17	52	83	32	3.90		23	65	93	50	9.50	
70	283.07	289.0	16	3.30		19	52	83	32	4.30	SS41 (BW TYPE)	23	65	93	50	10.90	SS41 (DUPLEX BW TYPE)
75	303.28	309.2	16	4.50		19	52	83	32	4.80		23	65	108	50	12.50	
80	323.49	329.4	16	5.50		19	52	83	32	5.40		23	65	108	50	13.90	
85	343.69	349.0	19	5.80		19	52	83	32	5.80							
90	363.90	369.9	19	6.00		19	52	83	32	6.00							

- NOTE:1. Sprocket marked with an asterisk (*) has a groove at the external circumference of hub. Groove diameters (Dg) are : 8T=18.00mm, 9T=21.00 mm, 10T=25.00 mm, 11T= 30.00mm, 12T= 32.00 mm.
2. 9-12 teeth of duplex B type sprockets have a groove at the external circumference of hub. Refer to single B type sprocket about width and position of the groove.
3. B-type solid sprockets over 35 teeth made by S35C are available.