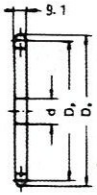
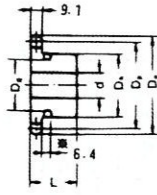


BS10B Standard Sprocket

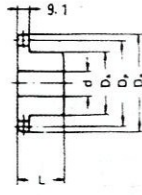
A TYPE



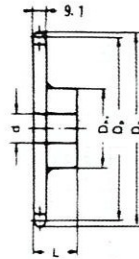
B TYPE



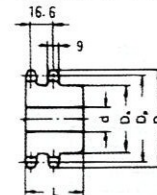
B TYPE



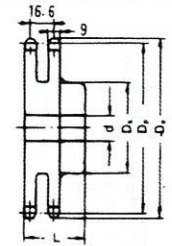
BW TYPE



DUPLEX B TYPE



DUPLEX BW TYPE



No. of Teeth	Pitch Dia Dp	Outside Dia Do	A Type			B Type /BW Type					Duplex B Type / Duplex BW Type						
			Bore : d	Approx. WT (kg)	Material	Bore : d		Hub		Approx. WT (kg)	Material	Bore : d		Hub		Approx. WT (kg)	Material
						Min.	Max.	Dh	L			Min.	Max.	Dh	L		
8	41.48	47.0	9	0.09		9	15.9	28.6	25.4	0.19	*						
9	46.41	52.6	10	0.10		10	19	34	25	0.20	*						
10	51.38	57.5	10	0.11		10	22	40	25	0.27	*	14	22	35	40	0.38	
11	56.35	63.0	10	0.15		13	24	46	25	0.33	*	14	24	40	40	0.50	
12	61.34	68.0	12	0.18		13	30	51	25	0.41	*	14	26	42	40	0.60	
13	66.34	73.0	13	0.18		13	30	51	25	0.46	*	14	30	49	40	0.73	
14	71.34	78.0	13	0.20		13	32	52	25	0.52	*	14	32	54	40	0.87	
15	76.35	83.0	13	0.26		13	36	57	25	0.62	*	14	35	59	40	1.00	
16	81.37	88.0	13	0.30		13	40	62	25	0.72	*	14	38	64	45	1.30	
17	86.39	93.0	13	0.35		13	42	67	25	0.83	*	14	40	68	45	1.50	
18	91.42	98.3	13	0.40		13	48	72	28	1.00	*	14	45	74	45	1.70	
19	96.45	103.3	13	0.44		13	48	73	28	1.10	*	14	48	79	45	2.00	
20	101.48	108.4	14	0.50		14	48	73	28	1.20	*	18	50	84	45	2.20	
21	106.51	113.4	14	0.54		14	48	73	28	1.20	*	18	54	89	45	2.50	
22	111.55	118.0	16	0.59		16	48	73	28	1.30	*	18	65	94	50	2.90	
23	116.58	123.4	16	0.65		16	48	73	28	1.30	S35C	18	65	99	50	3.30	S35C (DUPLEX B TYPE)
24	121.62	128.3	16	0.70		16	48	73	28	1.45	(B TYPE)	18	65	105	50	3.60	
25	126.66	134.0	16	0.80		16	48	73	28	1.50		18	65	105	50	4.00	
26	131.70	139.0	16	0.85		16	48	73	28	1.50		18	65	105	50	4.40	
27	136.74	144.0	16	0.90		16	48	73	28	1.50		18	65	105	50	4.80	
28	141.79	148.7	16	1.00		16	48	73	28	1.60		18	70	110	50	4.90	
29	146.83	153.8	16	1.10		16	48	73	28	1.70		18	70	110	50	4.95	
30	151.87	158.8	16	1.15		16	48	73	28	1.80		18	80	120	50	5.00	
31	156.92	163.9	16	1.20		16	48	73	28	1.80		23	80	120	50	5.20	
32	161.96	168.9	16	1.26	SS41	16	48	73	28	1.90		23	80	120	50	5.30	
33	167.01	174.5	16	1.35		16	48	73	28	2.00		23	80	120	50	5.40	
34	172.05	179.0	16	1.45		16	48	73	28	2.10		23	80	120	50	5.60	
35	177.10	184.1	16	1.55		16	48	73	28	2.20		23	80	117	50	5.80	
36	182.14	189.1	19	1.67		19	52	83	35	2.70		23	80	117	50	5.90	
37	187.19	194.2	19	1.80		19	52	83	35	2.80							
38	192.24	199.2	19	1.85		19	52	83	35	2.90		23	80	117	50	5.90	
39	197.29	204.2	19	2.00		19	52	83	35	3.00							
40	202.33	209.3	19	2.05		19	52	82	35	3.10		23	80	117	56	6.20	
41	207.38	214.8	19	2.12		19	52	83	35	3.20							
42	212.43	219.9	19	2.30		19	52	83	35	3.30		23	65	98	56	7.10	
43	217.48	224.9	19	2.43		19	52	83	35	3.40							
44	222.53	230.0	19	2.60		19	52	83	35	3.50							
45	227.58	235.0	19	2.60		19	52	83	35	3.60		23	65	98	56	7.30	
46	232.63	240.1	19	2.70		19	52	83	35	4.00	SS41 (BW TYPE)						
48	242.73	250.2	19	3.00		19	52	83	35	4.00		23	65	98	56	8.20	
50	252.83	260.3	19	3.30		19	52	83	35	4.20		23	65	98	56	9.00	(DUPLEX BW TYPE)
54	273.02	280.5	19	3.90		19	52	83	35	4.80		23	65	98	56	9.90	
60	303.33	310.8	19	4.80		19	52	83	35	5.60		23	65	98	63	11.70	
65	328.58	336.5	19	5.80		19	60	93	40	6.90		23	65	98	63	13.80	
70	353.84	361.8	20	6.35		20	60	93	40	7.70		23	65	98	63	14.60	
75	379.10	387.1	20	7.00		20	60	93	40	8.60		23	65	108	63	20.30	
80	404.36	412.3	20	8.46		20	60	93	40	10.10		23	65	108	63	22.22	
85	429.62	437.6	20	9.00		20	60	93	40	11.60							
90	454.80	462.8	20	9.50		20	60	93	40	13.10							

Dimension:mm

- NOTE: 1. Sprocket marked with an asterisk (*) has a groove at the external circumference of hub. Groove diameters (Dg) are : 8T=22.00mm, 9T=27.00mm, 10T=32.04mm, 11T= 37.00 mm, 12T= 42.00mm, 13T=47.00mm
2. 8-13 teeth of duplex B type sprockets have a groove at the external circumference of hub. Refer to single B type sprocket about width and position of the groove.
3. B-type solid sprockets over 35 teeth made by S35C are available.