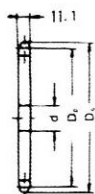
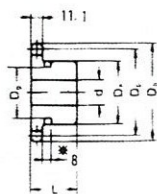


BS12B Standard Sprocket

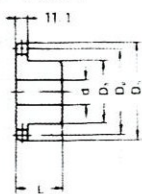
A TYPE



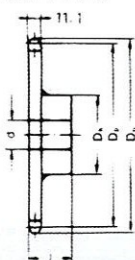
B TYPE



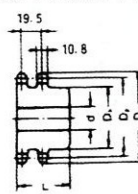
B TYPE



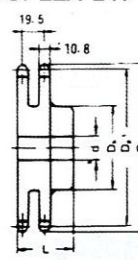
BW TYPE



DUPLEX B TYPE



DUPLEX BW TYPE



Dimension:mm

No. of Teeth	Pitch Dia Dp	Outside Dia Do	A Type			B Type /BW Type					Duplex B Type / Duplex BW Type						
			Bore : d	Approx. WT (kg)	Material	Bore : d		Hub		Approx. WT (kg)	Material	Bore : d		Hub		Approx. WT (kg)	Material
						Min.	Max.	Dh	L			Min.	Max.	Dh	L		
8	49.78	57.6	10	0.09		10	15.9	37.3	31.8	0.35	*						
9	55.70	62.0	10	0.10		10	24	43	32	0.40	*						
10	61.65	69.0	14	0.20		14	30	49	32	0.49	*	16	24	39	50	0.70	
11	67.62	75.0	14	0.26		14	32	51	32	0.60	*	16	26	44	50	0.80	
12	73.60	81.50	14	0.30		14	32	51	32	0.69		16	30	50	50	1.10	
13	79.60	87.5	14	0.37		14	35	57	32	0.81		18	35	60	50	1.30	
14	85.61	93.6	16	0.43		16	38	62	32	0.96		18	40	66	56	1.70	
15	91.62	99.8	16	0.51		16	42	68	32	1.10		18	45	72	56	2.00	
16	97.65	105.5	16	0.60		16	45	73	32	1.30		18	48	78	56	2.40	
17	103.67	115.5	16	0.68		16	45	73	32	1.40		18	50	82	56	2.80	
18	109.71	118.0	16	0.75		16	50	83	40	2.00		18	55	90	56	3.10	
19	115.74	124.2	16	0.88		16	50	83	40	2.10		18	65	94	56	3.60	
20	121.78	129.7	16	0.96		16	50	83	40	2.20		23	65	100	56	4.10	
21	127.82	136.0	16	1.10		16	50	83	40	2.30		23	65	100	56	4.50	
22	133.86	141.8	16	1.15		16	50	83	40	2.50	S35C (B TYPE)	23	65	100	56	5.00	(DUPLEX B TYPE)
23	139.90	149.0	16	1.20		16	50	83	40	2.50		23	65	100	56	4.60	
24	145.95	153.9	16	1.40		16	50	83	40	2.60		23	80	120	56	4.80	
25	151.99	160.0	16	1.51		16	50	83	40	2.70		23	80	120	56	5.00	
26	158.04	165.9	16	1.65		16	50	83	40	2.90		23	80	120	56	5.30	
27	164.09	172.3	16	1.70		16	50	83	40	3.00		23	80	120	56	5.50	
28	170.14	178.0	16	1.90		16	50	83	40	3.10		23	80	120	56	5.90	
29	176.20	184.1	16	2.05		16	50	83	40	3.20		23	80	120	56	6.00	
30	182.25	190.5	20	2.25	SS41	20	50	83	40	3.40		28	85	130	56	6.50	
31	188.30	196.3	20	2.40		20	50	83	40	3.55		28	85	130	56	6.80	
32	194.35	203.3	20	2.55		20	50	83	40	3.70		28	85	127	56	7.00	
33	200.41	209.3	20	2.70		20	50	83	40	3.85		28	85	127	56	7.40	
34	206.46	214.6	20	2.90		20	50	83	40	4.00		28	85	127	56	7.60	
35	212.52	221.0	20	3.12		20	50	83	40	4.20		28	85	127	56	7.80	
36	218.57	226.8	20	3.21		20	50	83	40	4.40		28	65	98	56	8.00	
37	224.63	232.9	20	3.45		20	50	83	40	4.60							
38	230.69	239.0	20	3.66		20	50	83	40	4.80		28	65	98	56	9.20	
39	236.74	245.1	20	3.83		20	50	83	40	4.95							
40	242.80	251.3	20	4.05		20	50	83	40	5.10		28	65	98	56	9.70	
41	248.36	257.3	20	4.22		20	60	93	45	5.50							
42	254.92	264.5	20	4.37		20	60	93	45	6.00	SS41 (BW TYPE)	28	70	107	56	11.00	
45	273.09	282.5	20	5.08		20	60	93	45	6.70		28	70	107	71	12.80	
48	291.27	300.1	20	5.57		20	60	93	45	7.40		28	70	107	71	14.00	
50	303.39	312.3	20	6.25		20	60	93	45	7.90		28	70	107	71	16.00	
54	327.63	336.6	20	7.25		20	60	93	45	8.90		28	70	107	71	18.00	
60	363.99	373.0	20	9.00		20	60	93	45	10.60		28	70	107	71	21.50	
65	394.30	403.2	20	10.60		20	65	107	45	12.80		28	70	107	71	26.00	
70	424.61	433.6	20	12.20		20	65	107	45	14.40		28	70	107	71	29.00	
75	454.92	463.9	20	13.00		20	65	107	45	16.30		28	85	128	71	40.50	
80	485.23	494.2	20	14.00		20	65	107	45	17.30		28	85	128	71	47.00	
85	515.54	524.5	20	15.90		20	65	107	45	22.00							
90	545.85	554.8	20	18.30		20	65	107	45	24.00							

- NOTE: 1. Sprocket marked with an asterisk (*) has a groove at the external circumference of hub. Groove diameters (Dg) are : 8T=27.00mm, 9T=32.00mm, 10T=37.00mm, 11T = 45.00 mm
2. 9-11 teeth of duplex B type sprockets have a groove at the external circumference of hub. Refer to single B type sprocket about width and position of the groove.
3. B-type solid sprockets over 30 teeth made by S35C are available.