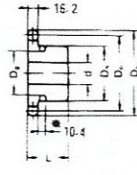


BS16B Standard Sprocket

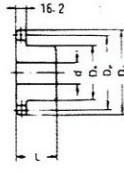
A TYPE



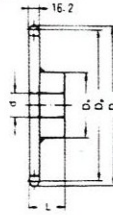
B TYPE



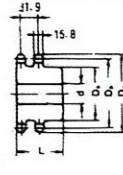
B TYPE



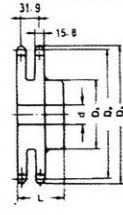
BW TYPE



DUPLEX B TYPE



DUPLEX BW TYPE



Dimension:mm

No. of Teeth	Pitch Dia Dp	Outside Dia Do	A Type			B Type /BW Type					Duplex B Type / Duplex BW Type							
			Bore : d	Approx. WT (kg)	Material	Bore : d		Hub		Approx. WT (kg)	Material	Bore : d		Hub		Approx. WT (kg)	Material	
						Min.	Max.	Dh	L			Min.	Max.	Dh	L			
8	66.37	77.0	11	0.64	SS41	11	25	44.5	41.3	0.7	S35C (B TYPE)							
9	74.27	85.0	11	0.54		11	35	58	40	0.8								
10	82.19	93.0	17	0.58		17	32	52	40	0.9		21	35	58	63	1.80	S35C (DUPLEX B TYPE)	
11	90.16	99.5	17	0.62		17	38	60	40	1.2		21	35	60	63	2.40		
12	98.14	109.0	17	0.55		17	42	67	40	1.5		23	40	69	63	2.50		
13	106.14	117.0	17	0.87		17	48	77	40	1.9		23	50	80	63	3.10		
14	114.15	125.0	17	1.02		17	48	77	40	2.0		23	54	88	63	3.70		
15	122.17	133.0	20	1.20		20	60	93	40	2.6		23	65	95	63	4.30		
16	130.20	141.0	20	1.35		20	60	93	40	2.8		23	65	100	71	5.50		
17	138.23	149.0	20	1.54		20	60	93	40	3.0		23	65	100	71	6.40		
18	146.27	157.0	20	1.75		20	60	93	40	3.2		23	80	120	71	6.00		
19	154.32	165.2	20	1.95		20	60	93	40	3.4		23	80	120	71	6.40		
20	162.37	173.2	20	2.15		20	60	93	40	3.6		23	85	130	71	7.60		
21	170.42	181.2	20	2.41		20	60	93	40	3.8		23	85	130	71	7.80		
22	178.48	189.3	20	2.63		20	65	107	45	4.8		25	80	117	71	8.80		
23	186.54	197.5	20	2.90		20	65	107	45	5.1		25	80	117	71	9.30		
24	194.60	205.5	20	3.20		20	65	107	45	5.4		25	80	117	80	10.50		
25	202.66	213.5	20	3.45		20	65	107	45	5.6		25	80	117	80	11.10		
26	210.72	221.6	20	3.70		20	65	107	45	5.9		25	80	117	80	11.70		
27	218.79	229.6	20	3.96		20	65	107	45	6.1		25	80	117	80			
28	226.86	237.7	20	4.26		20	65	107	45	6.5		25	80	117	80	13.00		
29	234.93	245.8	20	4.65	20	65	107	45	6.8	25	80	117	80					
30	243.00	254.0	20	5.00	20	65	107	45	7.1	25	80	117	80	14.20				
31	251.07	262.0	20	5.30	20	65	107	45	7.5	25	80	117	80					
32	259.14	270.0	20	5.60	20	65	107	45	7.8	25	80	117	80	16.50				
33	267.21	278.5	20	6.00	20	65	107	45	8.2	25	80	117	80					
34	275.29	287.0	20	6.40	20	65	107	45	8.5	25	80	117	80					
35	283.36	296.2	20	6.85	20	65	107	45	8.9	25	80	117	80	17.90				
36	291.43	304.6	20	7.20	20	70	117	50	10.1	25	80	117	80					
37	299.51	312.6	20	7.40	20	80	117	50	10.5									
38	307.58	320.7	20	8.00	20	70	117	50	10.9	25	85	127	80	21.00				
40	323.74	336.9	20	9.00	20	70	117	50	11.8	25	85	127	90	23.70				
41	331.81	345.0	20	9.42	20	80	117	50	12.5									
42	339.89	353.0	20	9.75	20	70	117	50	12.7	25	85	127	90	27.20				
43	347.97	361.1	20	10.34	20	80	117	50	13.2									
44	356.04	369.1	20	10.65	20	80	117	50	13.8									
45	364.12	377.1	20	11.30	20	70	117	50	14.2	25	85	127	90	28.40				
46	372.20	385.2	20	11.80	20	80	117	50	15.1									
47	380.28	393.2	20	12.20	20	80	117	50	15.1									
48	388.36	401.3	20	13.00	20	70	117	50	15.8	25	85	127	90	32.00				
49	396.44	409.3	20	14.00	20	80	117	50	17.0									
50	404.52	417.4	20	14.80	20	70	117	50	17.6	25	85	127	90	35.00				
54	436.84	448.3	20	17.00	20	70	117	50	19.2	25	85	127	90	38.50				
60	485.33	498.3	20	21.00	20	70	117	50	23.1	25	85	127	90	46.20				
65	525.73	538.8	20	25.00	20	70	117	50	27.1	25	85	127	90	55.00				
70	566.15	579.2	20	28.30	230	70	117	50	32.1	25	85	127	90	65.00				
75	606.56	619.7	20	32.00	20	80	127	63	36.2	25	90	138	90	72.00				
80	616.97	660.0	20	38.00	20	80	127	63	42.2	25	90	138	90	89.00				
85	687.30	699.9	25	42.00	20	80	127	63										
90	727.80	740.3	25	48.00	20	80	127	63										

- NOTE: 1. Sprocket marked with an asterisk (*) has a groove at the external circumference of hub. Groove diameters (Dg) are : 8T=36.00mm, 9T=44.00mm
2. 9 teeth of duplex B type sprockets have a groove at the external circumference of hub. Refer to single B type sprocket about width and position of the groove.
3. B-type solid sprockets over 21 teeth made by S35C are available.