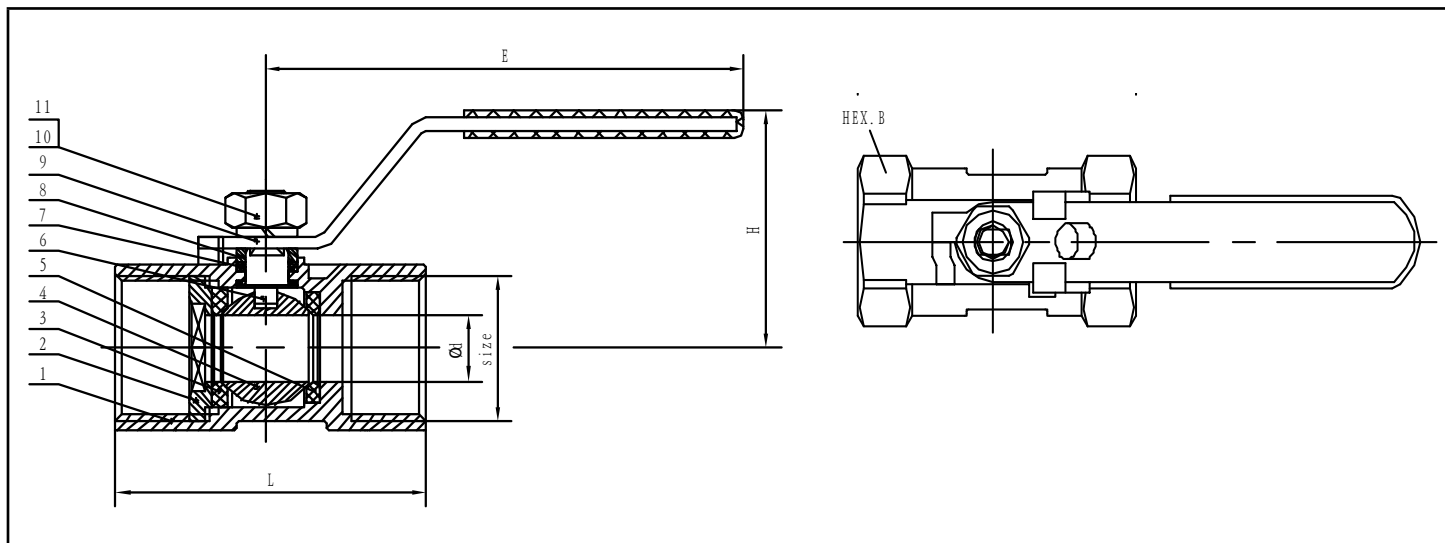


# 1 PC STAINLESS STEEL BALL VALVE

## REDUCE PORT, 1000 WOG, PN64



NO	PARTS NAME	MATERIAL
1	Body	A351 CF8M
2	Bonnet	A276 316
3	Seat	PTFE/RPTFE
4	Ball	SS316
5	Seat	PTFE/RPTFE
6	Stem	A276 316
7	Stem Gasket/Packing	PTFE
8	Packing Gland	A276 304
9	Handle	A276 201
10	Handle Nut	A194 8
11	Spring Washer	A276 304

MAIN TECHNICAL PARAMETER			
NORMAL PRESSURE		1000	PSI
Test pressure	Shell test pressure	10.5	MPa
	Tightness test	7.7	
	Gas-Tightness Test	0.6	
Max working temperature		-20 ~ 180	°C
Applicable medium: water, gas, oil, acid			

### TECHNICAL SPECIFICATION

- 1 Basic design and manufacture according to ANSI B16.34
- 2 BSPT Threaded ends
- 3 Inspection and tested according to API598

SIZE	Ød	L	H	E	HEX.B	End Thread
1/4"	5	39	31	70	17	BSPT
3/8"	7	44	36	80	21	
1/2"	9	59	42	95	25	
3/4"	12.5	60	45	95	32	
1"	15	72	54	110	38	
1-1/4"	20	77	59	110	48	
1-1/2"	25	84	63.5	150	53	
2"	32	100	70	150	66	
2-1/2"	38	120	95	200	82	
3"	48	142	103	200	96	